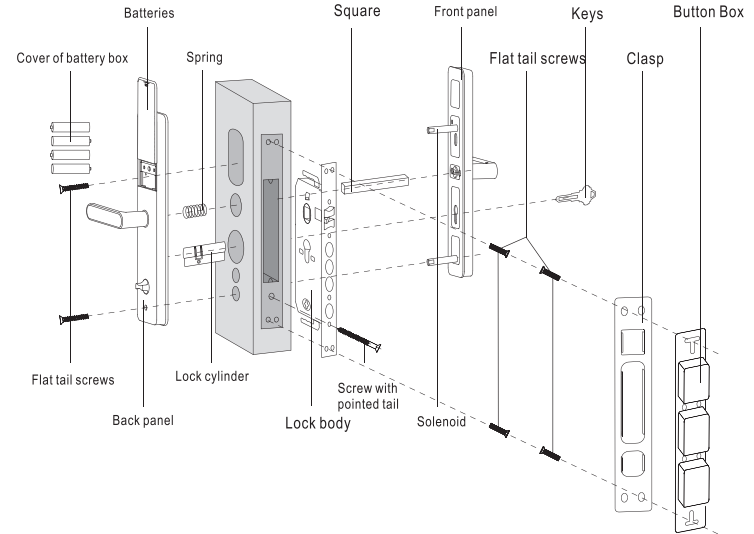


# Table of contents

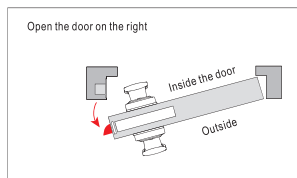
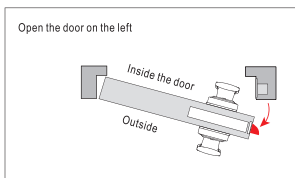
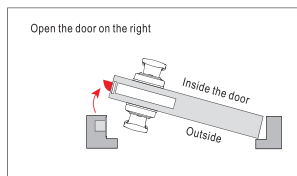
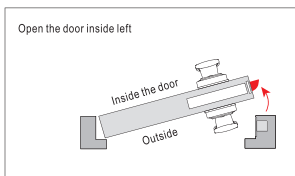
Before installing smart locks, please read this manual carefully and keep it for future reference.

# Table of contents

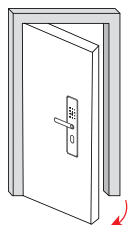
Schematic diagram of door lock.....	02
Annex.....	02
Installation tutorial.....	03
1. Top View of door opening direction.....	03
2. Measure the size of the door.....	04
3. Install Buckle Box and buckle plate.....	06
4. Adjust the lock body.....	06
5. Install Lock Body and lock core.....	07
6. Adjust the grip.....	08
7. Install door locks.....	09
Product benefits and features.....	13
Language setting shortcut key method.....	13
Second, technical parameters.....	14
Functions and Operations.....	14
1. Initial state.....	14
2. Enter the menu.....	14
3. Create a new user.....	14
4. Delete the user.....	15
5. System settings.....	15
6. Voice broadcast sequence.....	16



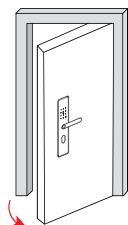
## 1. Top View of door opening direction



Open the door on the left

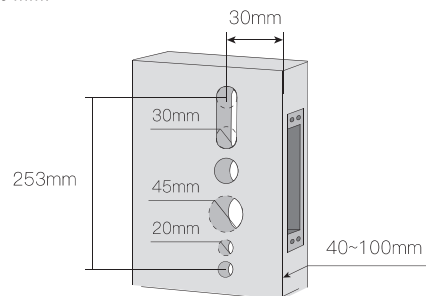


Open the door on the right



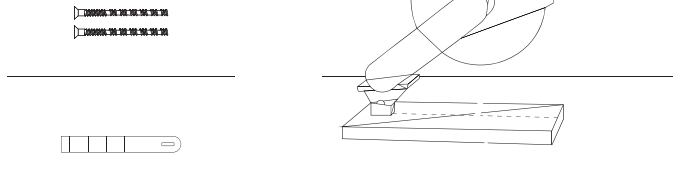
## 2. Measure the size of the door

Make sure the door thickness is between 40 and 100 mm, the door openings are 30,30 and 45 mm in diameter, and measure the lock body to bolt back distance of 30 mm.

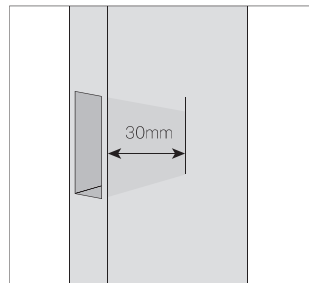


⚠ Apply to door thickness 40 - 100mm. If door thickness beyond this range, please contact us for more information.

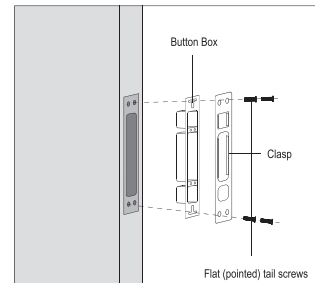
Please cut the slub screws and the length of the flat ruler according to the thickness of the door



### 3. Install the buckle box and buckle plate

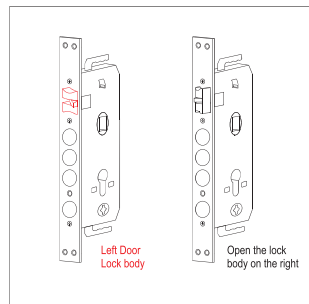


(1) The keyhole in the door frame should be drilled at least 30mm deep to allow enough space for the lock to extend.

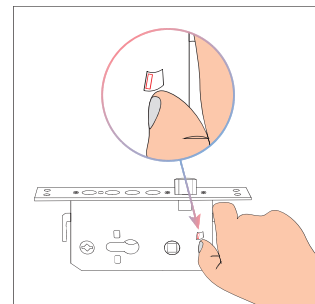


(2) Fasten the buckle box and the buckle plate with four screws (Pointed tail screws for wooden doors).

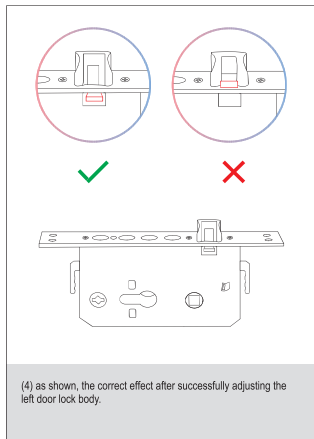
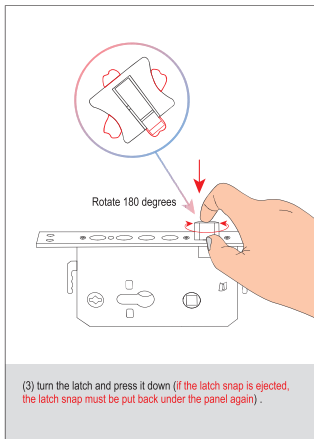
### 4. Adjust the lock body



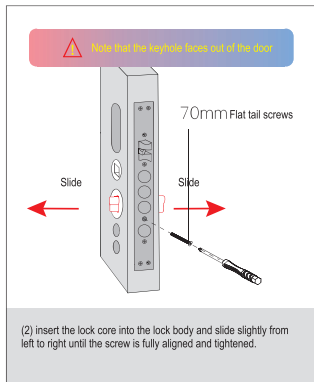
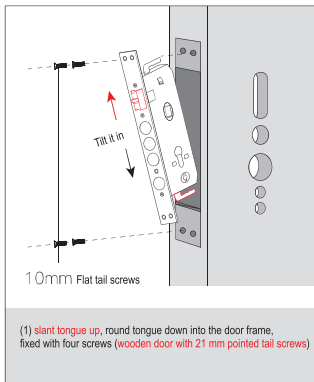
(1) The factory default is the right door lock body, if it is suitable for the door opening mode, it can enter P.9 [ install the door lock ] directly



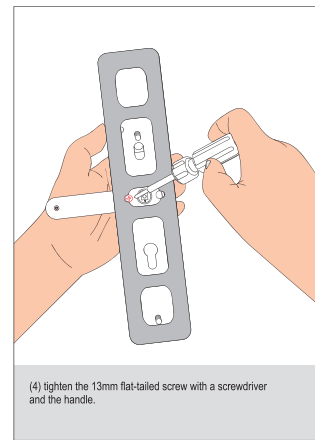
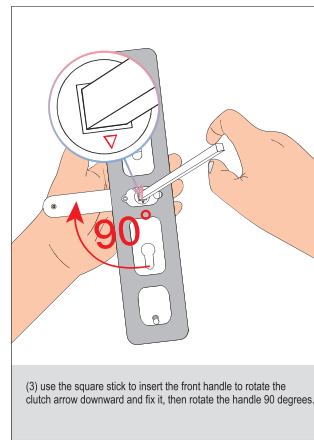
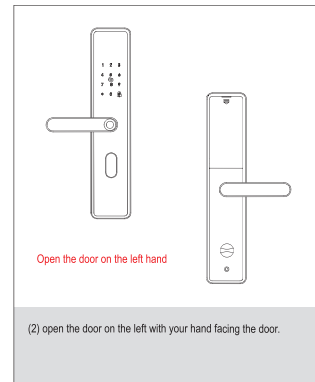
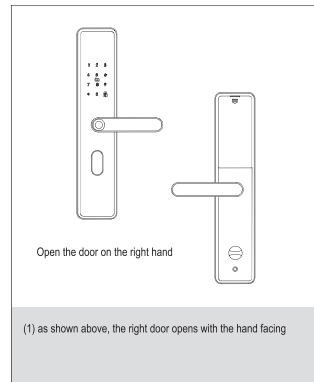
(2) If you need to adjust the lock body of the left door, pull the paddle backward first.

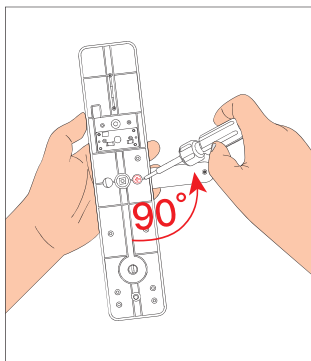


## 5. Install the lock body and the lock core

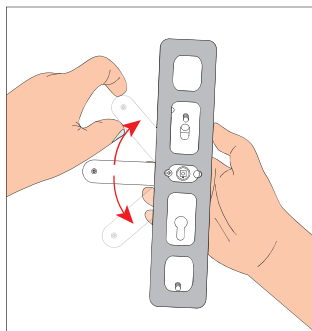


## 6. Adjust the grip

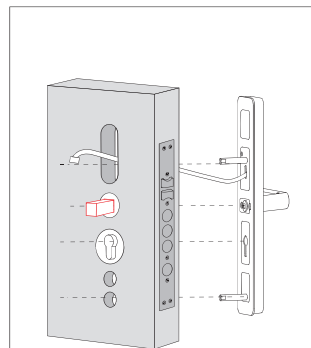




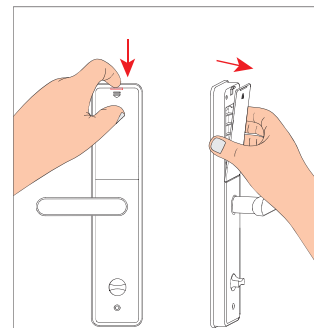
(5) then turn the rear handle 90 degrees in the opposite direction and fix it with 13mm flat-tail screw to tighten it.



(6) after adjusting, press the handle up and down to check whether the two handles are smooth.

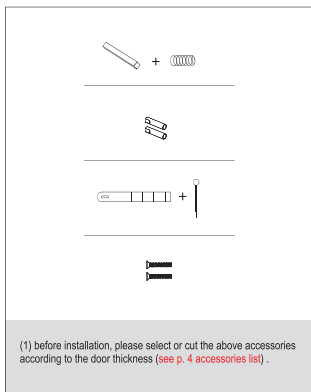


(3) insert the square rod into the lock body, the front panel main line passes through the upper part of the lock body, and fasten it at the square rod.

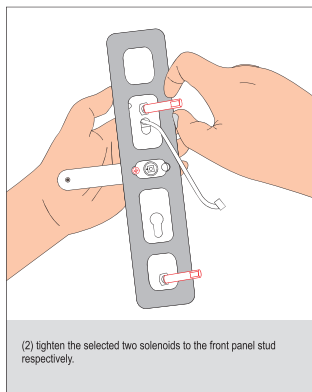


(4) press the top of the battery cover of the rear panel and drag it out to open the battery cover (the other way around when installing).

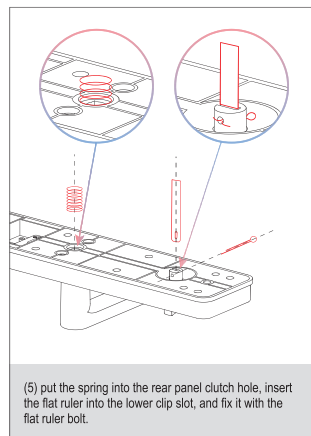
## 7. Install door locks



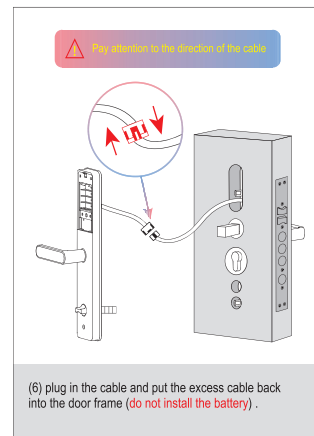
(1) before installation, please select or cut the above accessories according to the door thickness (see p. 4 accessories list).



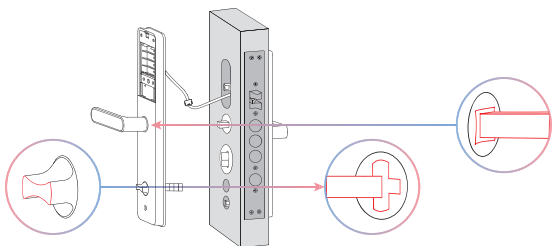
(2) tighten the selected two solenoids to the front panel stud respectively.



(5) put the spring into the rear panel clutch hole, insert the flat ruler into the lower clip slot, and fix it with the flat ruler bolt.

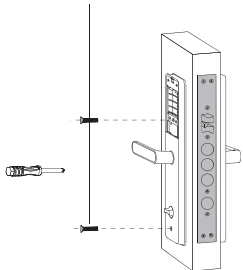


(6) plug in the cable and put the excess cable back into the door frame (do not install the battery).



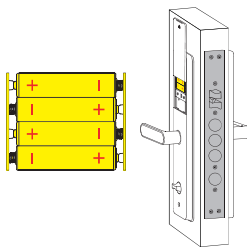
(7) Insert and fasten the flat ruler and square rod in turn as shown above (when installing the flat ruler, pay attention to the manual knob corresponding to the circular latch).

45mm Flat tail screws



(8) Use two screws to fix and tighten the back (if the length is not enough, please use the bamboo screw to cut and install).

⚠ Pay attention to the direction of the battery installation.



(9) Four LR6 alkaline batteries are loaded into the cell and the cell cover is covered.

#### ⚠ Points to note

- When installing the door lock, make sure the electric wire will not be pressed down.
- When installing the lock core, pay attention to the direction of the lock hole.
- The rotating parts of the lock body must be able to operate smoothly and flexibly.
- Be sure to install the battery after the lock is installed.
- Please use the original lithium battery, first use please charge.
- The lock requires a mechanical key to be unlocked manually. The mechanical key is removed from the package and stored in a safe place where it can be used at any time.
- Replace the battery immediately when you hear the low voltage alarm.
- This lock is IP67, please pay attention to daily maintenance.
- Keep your fingers clean and dry when using this lock.
- WiFi (When selecting a mobile App connection for your product, you must enter it into your administrator and make sure you select a 2.4G network).

## Operation instructions

### 一、Product benefits and features:

- Fingerprints, cards, and passwords can be used to open the door
- Support remote control door opening, efficient and convenient
- A variety of door opening modes are available to enhance the security level of the door lock
- The addition and deletion of users is managed on a number-based basis
- Combined unlocking, dual function, makes the door lock more secure
- It has the function of preventing others from prying eyes
- POST function
- WeChat applet temporary password unlocking function
- All components are made of internationally renowned brand products, and the quality is stable and reliable
- The door lock modules are waterproof, moisture-proof and mildew-proof
- The door lock module has been tested for high and low temperature, vibration, aging, etc., and is suitable for harshness

### 二、Language setting shortcut key method

- 11# for Chinese
- 22# for English
- 33# for Indonesian
- 44# for Russian
- 55# Vietnamese
- 66# for Arabic
- 77# for Spanish
- 88# for Portuguese
- 99# for Thai

### 三、Second, technical parameters

Power supply	4.2V-6.5V
Typical quiescent current	<50 microamps
User Profile	<=100 group (the first group 00 is the administrator, 01 and subsequent numbers are used.) households)
The number of keys to open the door	There are a total of 100 groups of fingerprints/passwords/cards in the system, which are dynamically assigned.
Password length	6-10 bits
Resolution:	500DPI
Rejection rate:	≤0.15%
False Admission Rate:	≤0.00004%
Operating Temperature:	-20°C~60°C
Relative humidity:	20% ~ 93%



△ As shown in the figure: Ensure that the 5 fingerprint areas are fully recorded and the recognition rate will be 99.9%!

- Use the center of finger to enter, not fingertip.
- Scanning the same fingerprint from multiple angles
- Multiple fingerprints can be scanned for the same user.
- Keep your fingers clean and not too dry or wet.

### 四、Functions and Operations

#### 1. Initial state

In the initial state, any fingerprint, password, and card can open the door; Press the initialize button on the setup board for 3 seconds to restore the device to its initial state.

#### 2. Enter the menu (choose the way to enter the menu according to the customer's needs)

- 2.1 Touch the keyboard and press "\*" + "#" directly after lighting up the keyboard
- 2.2 Short press the initialization button;
- 2.3 Short press the setting button;

#### 3. Create a new user

1.New User  
2.Delete User  
3.System Set  
4.Record

User Num 00  
Enter Secret Key  
1234567890

Enter Secret Key  
1234567890

Voice broadcast order:

1:\*#Enter the system voice broadcast ~1>Create a new user, 2>Delete user 13

systemsettings,4Factoryreset”

2: “Press 1” voice broadcast: “Operation successful, user 00”

3: Voice broadcast: “Please enter the key”

Note: “User 00” is the administrator, and the administrator can register 10. Users 01-99 are common users

#### 4.Delete the user

1.New User  
2.Delete User  
3.System Set  
4.Record

User Num  
08

Succeed

Voice broadcast order:

1:##Enterthesystemvoicebroadcast:”1Newuser,2Deleteuser, 3 System settings,4 Factory reset”

2: “Press 2” voice broadcast: “Please enter user number”

3: Enter the number and press “#” to confirm the voice broadcast“0Operation successful

Note: User 00 administrator, the system does not have the right to delete, factory restore can delete administrator ?

#### 5.System settings

##### 5.1 Time Setting

1.New User  
2.Delete User  
3.System Set  
4.Record

1.Time & Date  
2.Volume  
3.Verify Mode  
4.Language

Enter Date  
2000-01-01

Enter Time  
00:00

Voice broadcast order:

1:##Enterthesystemvoicebroadcast:”1Newuser,2Deleteuser,3Systemsettings,4Factoryreset”  
2: “Press 3” voice broadcast: “1 time setting, 2 volume adjustment, 3 normally open mode”  
3: “Press 1” voice broadcast: “Please enter two years, two months, two days”  
4: Voice broadcast: “Please enter two hours, two points

##### 5.2 Volume Adjustment

1.New User  
2.Delete User  
3.System Set  
4.Record

1.Time & Date  
2.Volume  
3.Verify Mode  
4.Language

1.Volume +  
2.Volume -

Voice broadcast order:

1:##Enterthesystemvoicebroadcast:”1Newuser,2Deleteuser,3 System settings,4Factory reset”  
2: “Press 3” voice broadcast: “1 time setting, 2 volume adjustment, 3 normally open mode”  
3: “Press 2” voice broadcast: “1 increase the volume, 2 Reduce the volume

#### 5.3 Normally open mode

1.New User  
2.Delete User  
3.System Set  
4.Record

1.Time & Date  
2.Volume  
3.Verify Mode  
4.Language

1.Single Verify  
2.Double Verify

Voice broadcast order:

\*##Enterthesystemvoicebroadcast:”1Newuser,2Delete user,3 System settings,4Factoryreset”  
2: “Press 3” voice broadcast: “1 time setting, 2 volume adjustment, 3 normally open mode”  
3: “Press 3” voice broadcast: “1 Turn off normally open mode, 2 Turn on normally open mode” 恢复出厂设置

1.New User  
2.Delete User  
3.System Set  
4.Record

Factory Reset?  
YES NO

Initializing

#### 6.Voice broadcast sequence

1:##Enterthesystemvoicebroadcast:”1Newuser,2Delete user,3 System settings,4Factory reset”

2: “Press 4” voice broadcast: “Tick a sound”

3: “Press # to confirm” voice broadcast: “Initializing”

#### 1. Shortcut key settings definition

##### 2. Enter 1# to enter the configuration state

Starting Network

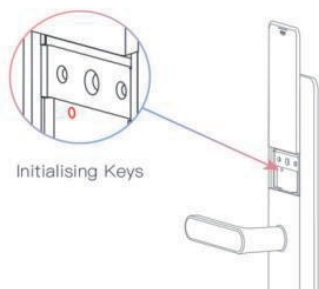
##### Enter 2# to clear the network

Resetting Network

##### Enter 4# to turn on and off

1.Tamper ON  
2.Tamper OFF

#### 1. Unlock the WeChat applet with a temporary password



⚠ All data on the door lock will be erased.